

THE
1858

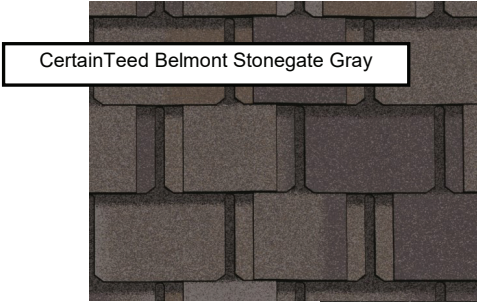


95 Cumming Street

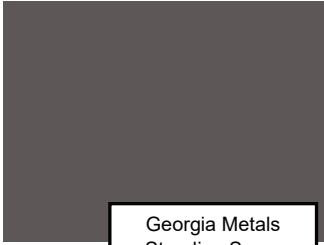
Lot 3

Interior Living SF: 3,513-3,939. Outdoor Living SF: 1,182. Total Living SF: 4,695-5,121.

1858 Lot 3



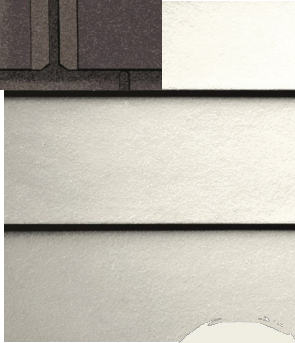
CertainTeed Belmont Stonegate Gray



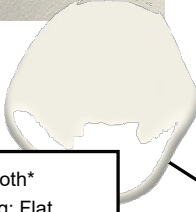
Georgia Metals
Standing Seam
Metal Roof Accent:
Shake-Gray*



The Coppersmith
'Georgetown Lantern'



Raised Panel Shutters, Accurately Sized
with Hingers and Shutter Dogs
Painted Sail Cloth Semi Gloss
Bronze Hardware



BM Sail Cloth*
Hardie Siding: Flat
Windows, Shutters, & Trim:
Semi Gloss



Jeld Wen
Traditional Double Hung
Exterior: French Vanilla
Simulated Divided Lites
Colonial Grill

Interior: Primed
Hardware: ORB

Ogee Gutters, Round Downspouts:
S&K Coppertone*

Montana Forge
H10 French Gold



Front Porch Floor,
Water Table:
Cherokee Brick
Brookhaven*
Mortor: Argos Putty

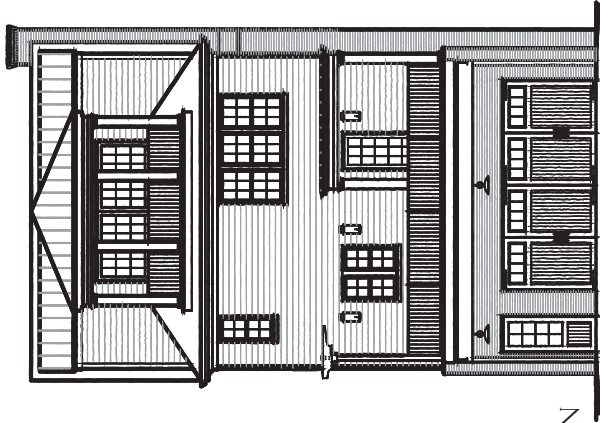


Tucker
Door 512 Primed
12 Lite Over Raised Panel
Double Front Doors
Semi-Solid Stain Amherst Gray*

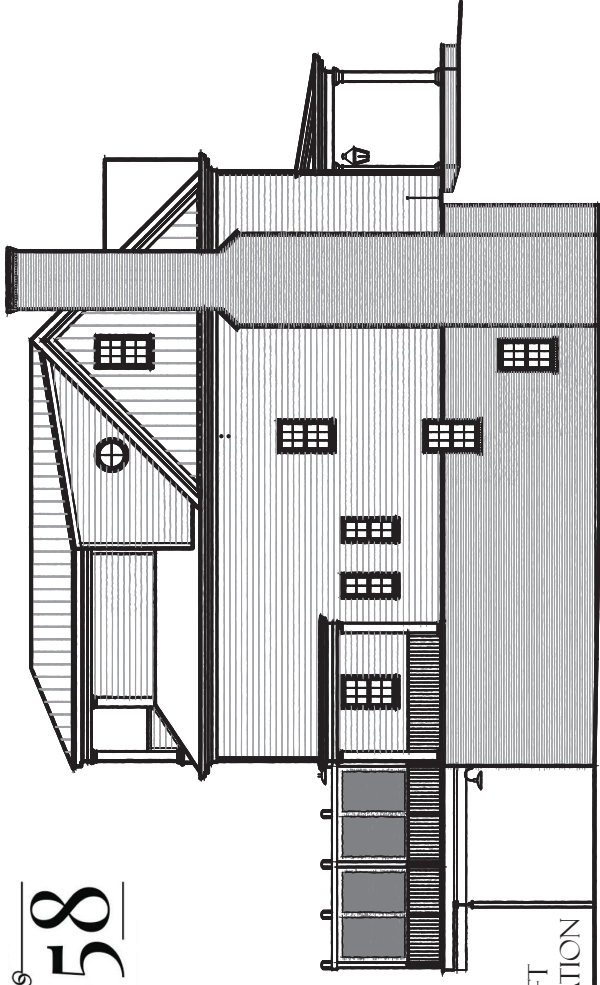


BM= Benjamin Moore, SW= Sherwin Williams
Selections to be field verified prior to application.
All Selections/Suppliers Subject to Change Due to Availability and Pricing

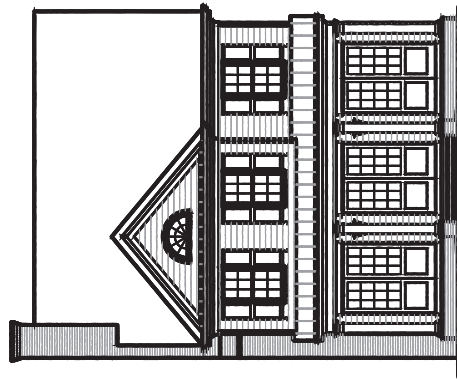
THE 1858



REAR ELEVATION



LEFT ELEVATION

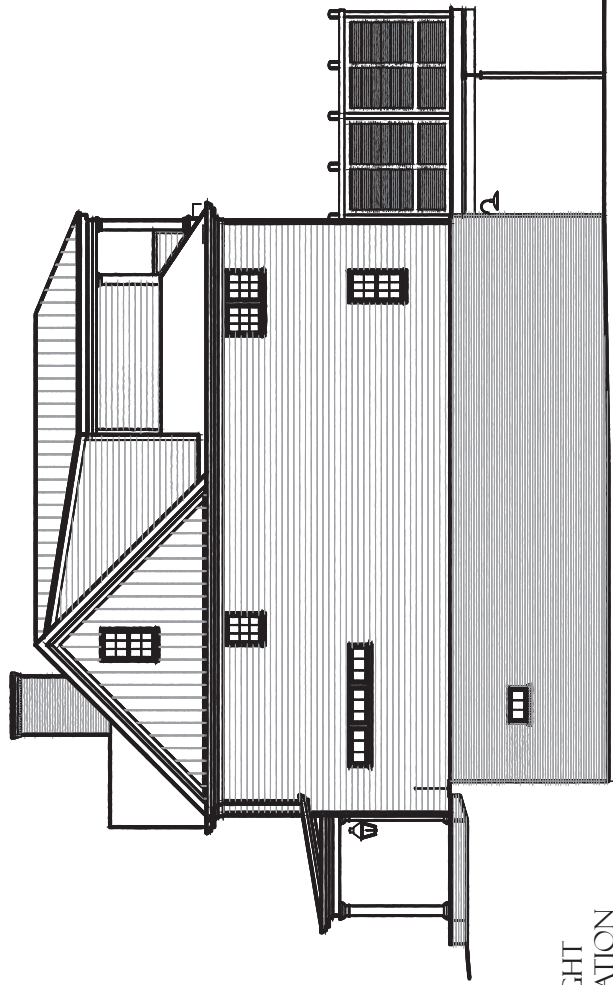


FRONT ELEVATION

LOT 3



DRAWINGS ARE AT 1/16"
SCALE WHEN PRINTED
ON A 8.5"X11"



RIGHT ELEVATION

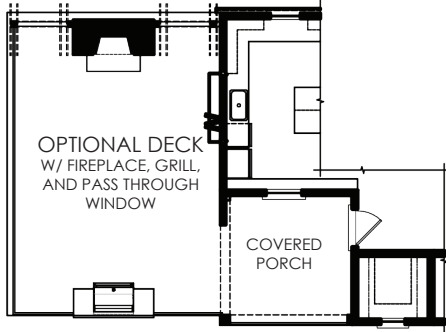
A CLASSICAL STUDIO
ARCHITECTURE

VISION
DEVELOPMENT PARTNERS, LLC

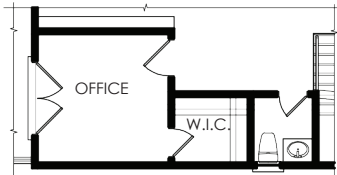
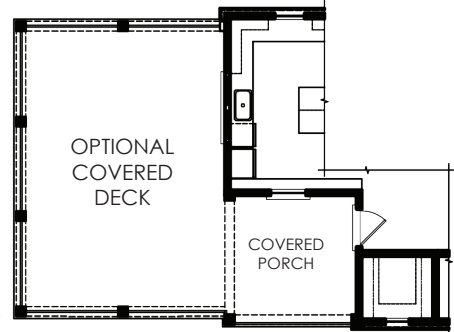
PATRICK MALLOY
COMMUNITIES

Alpharetta
EXPERT HOME ADVISORS
RE/MAX

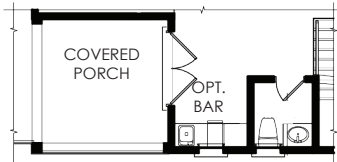
OPTIONAL DECK 1



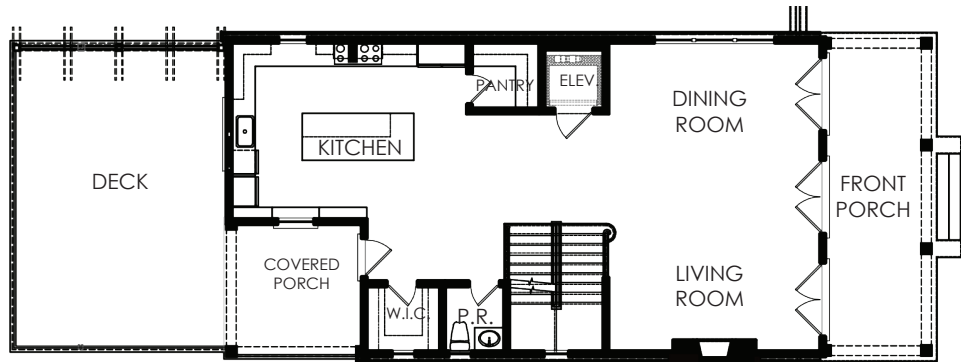
OPTIONAL DECK 2



OPTIONAL OFFICE
ADDTL. HEATED S.F. 140 S.F.

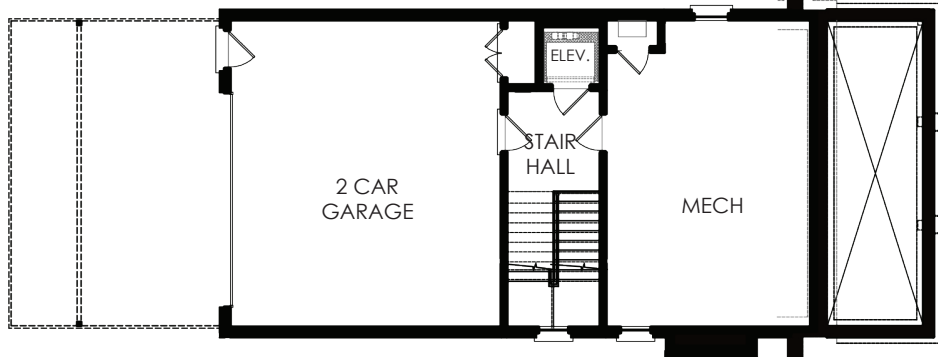
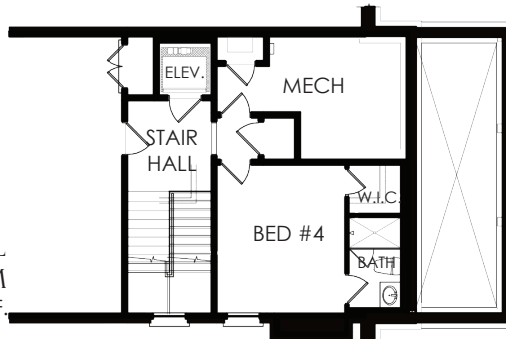


OPTIONAL BAR



MAIN LEVEL

OPTIONAL BEDROOM
ADDTL. HEATED S.F. 286 S.F.



LOWER LEVEL
LOT 3

HEATED S.F.	3,513 S.F.
OUTDOOR LIVING S.F.	1,182 S.F.
UNHEATED S.F.	851 S.F.
TOTAL	5,546 S.F.



DRAWINGS ARE AT 1/16"
SCALE WHEN PRINTED
ON A 8.5"X11"

THE
1858

A
CLASSICAL
STUDIO

VISION
DEVELOPMENT PARTNERS, LLC

PATRICK MALLOY
COMMUNITIES

AlpharettaZen
EXPERT HOME ADVISORS
RE/MAX

