

THE <sup>S</sup>  
1858



111 Cumming Street

Lot 11

Interior Living SF: 3,478-3,760. Exterior Living SF: 1,127 Total Living SF: 4,605-4,887.

1858 Lot 11



Jeld Wen  
Traditional Double Hung  
Exterior: French Vanilla  
Simulated Divided Lites  
Colonial Grill  
  
Interior: Primed  
Hardware: Matte Black

CertainTeed Landmark  
Max Def Georgetown Gray

Vertical Shiplap Shutters  
BM Black Beauty SemiGloss

Georgia Metals  
Standing Seam  
Metal Roof Accent:  
Old Town Gray

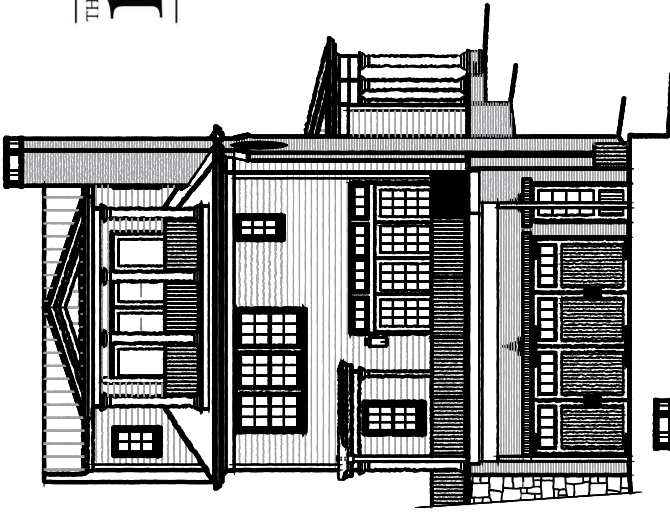
The Coppersmith  
'Georgetown Lantern'

Water Table, Chimney, Patio:  
Georgia St James Brick

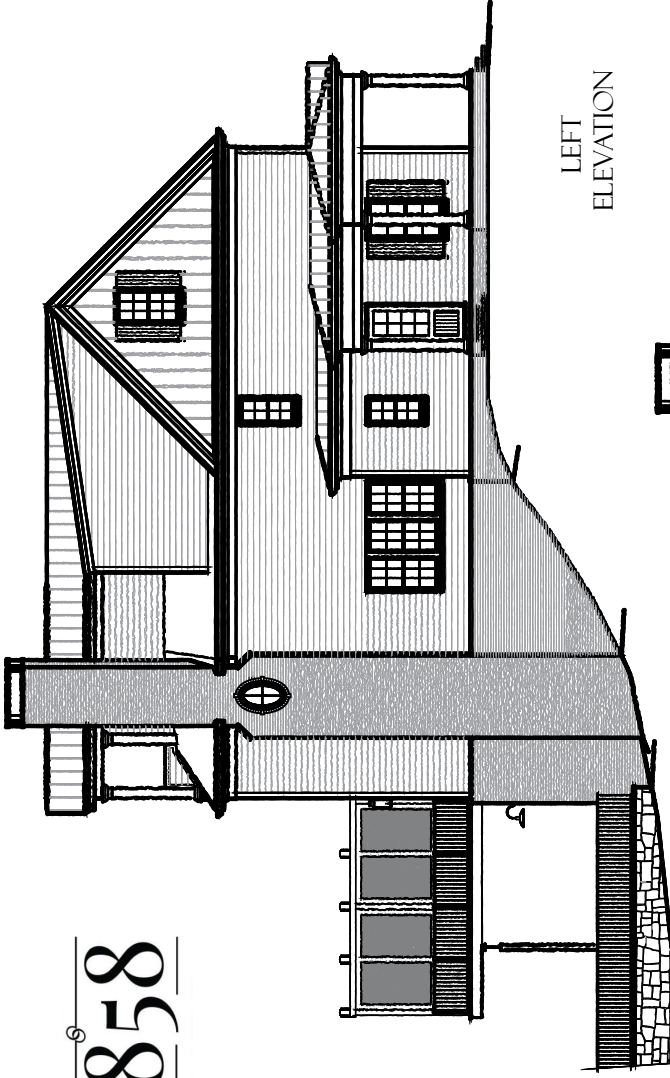
BM China White  
Hardie Siding: Flat  
Front Doors: Glossy  
All Trim: SemiGloss



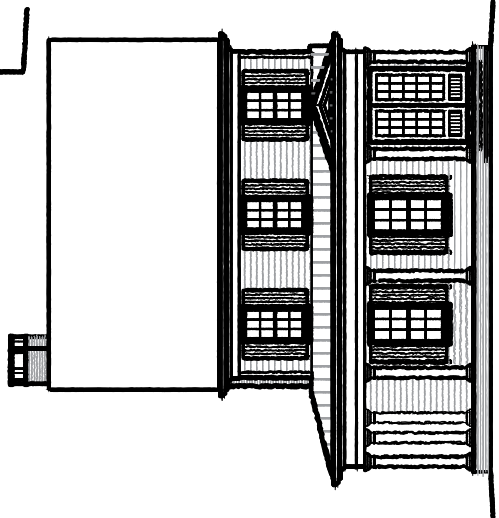
# THE 1858



REAR ELEVATION

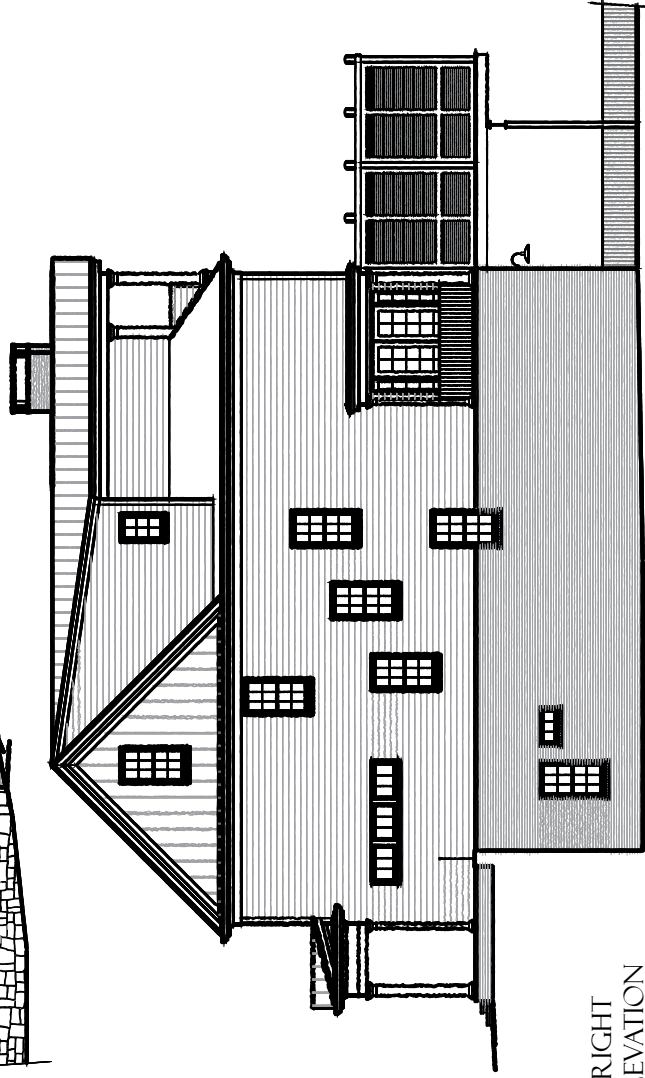


LEFT ELEVATION



FRONT ELEVATION

## LOT II



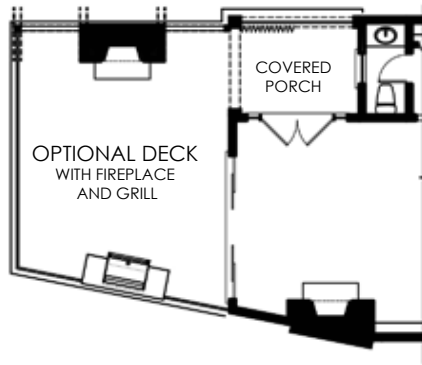
RIGHT ELEVATION



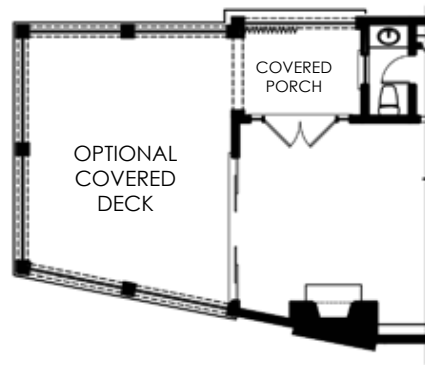
DRAWINGS ARE AT 1/16" SCALE WHEN PRINTED ON A 8.5"X11"



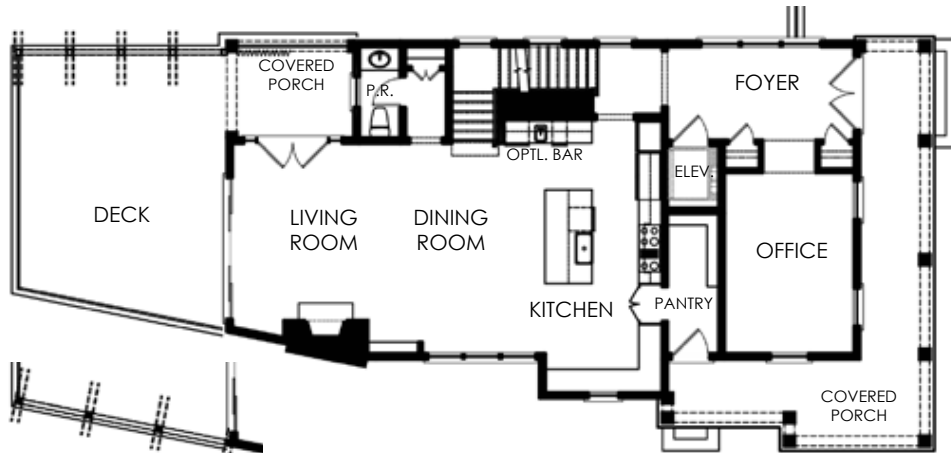
OPTIONAL  
DECK 1



OPTIONAL  
DECK 3



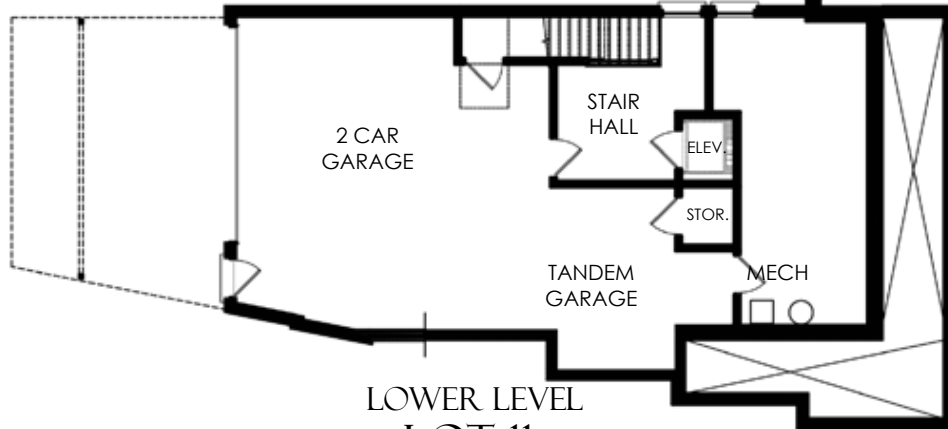
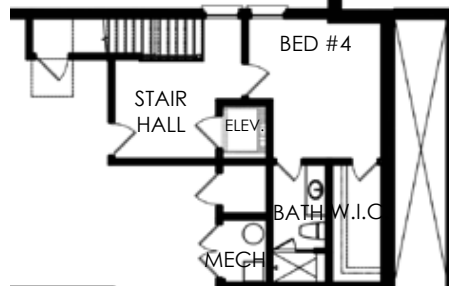
OPTIONAL  
DECK 2  
ADDITIONAL PRIVACY  
SCREEN



MAIN LEVEL

ADDTL. HEATED S.F.

OPTIONAL  
BEDROOM  
282 S.F.



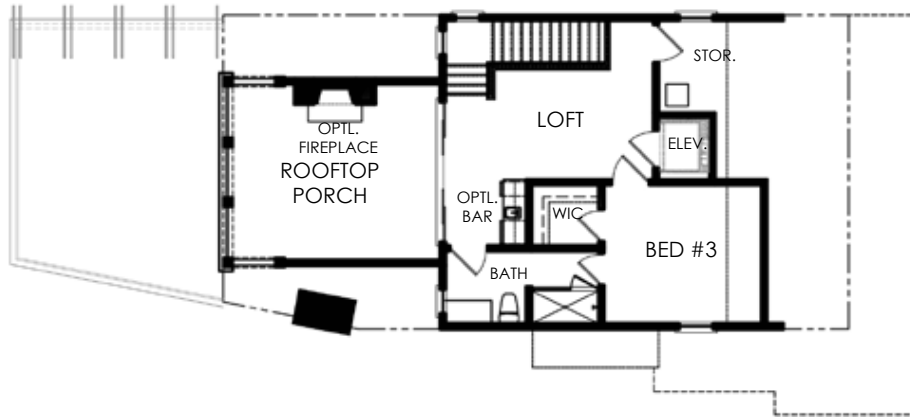
LOWER LEVEL  
LOT 11

HEATED S.F. 3,478 S.F.  
 OUTDOOR LIVING S.F. 1,127 S.F.  
 UNHEATED S.F. 1,249 S.F.  
**TOTAL 5,854 S.F.**

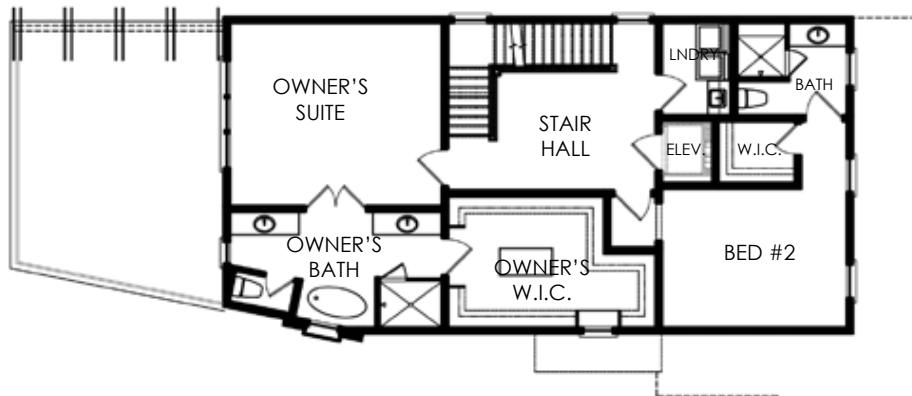


DRAWINGS ARE AT 1/16"  
 SCALE WHEN PRINTED  
 ON A 8.5"X11"

THE  
**1858**



ATTIC LEVEL



UPPER LEVEL  
LOT 11