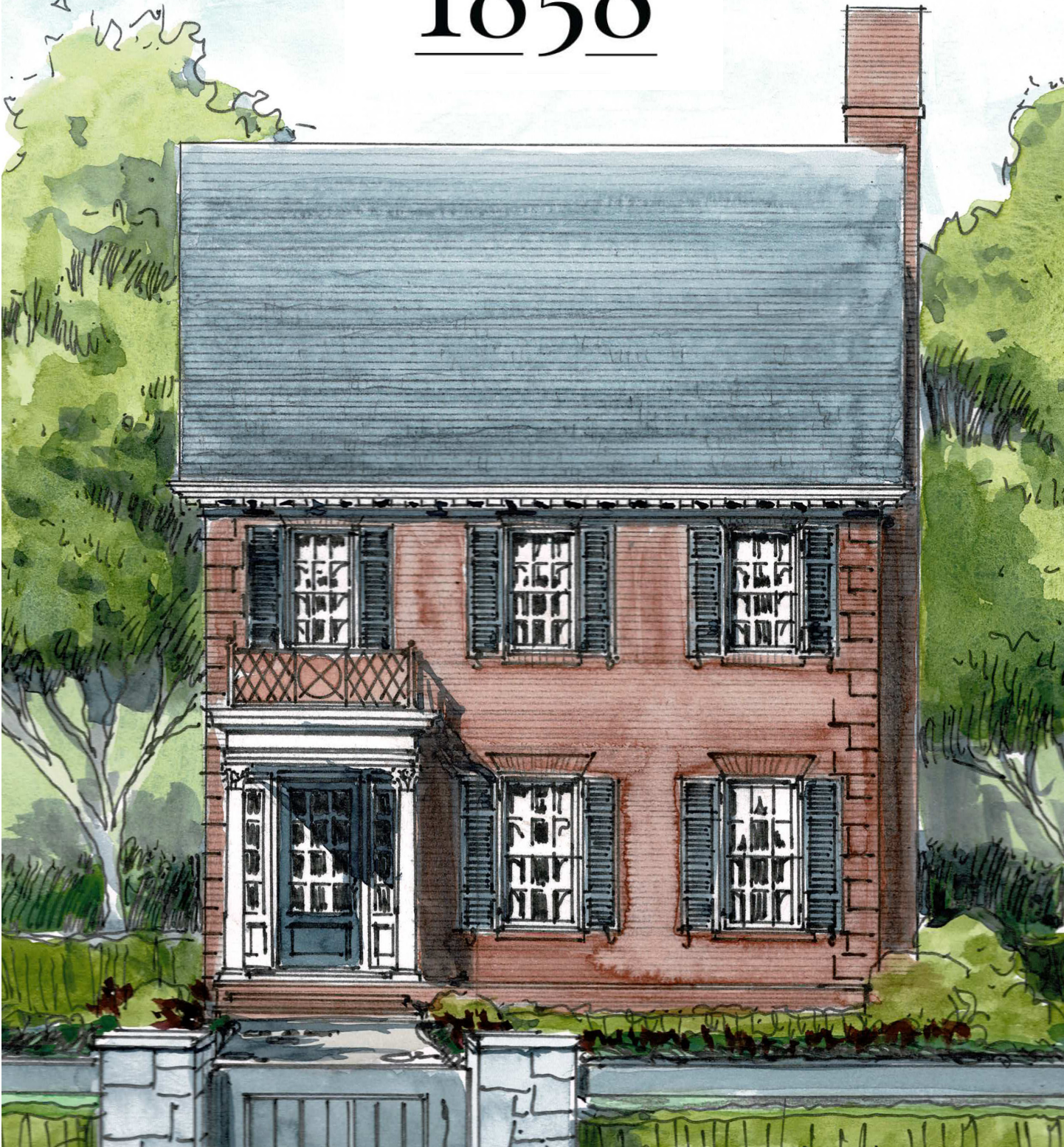


THE <sup>S</sup>  
1858



## 101 Cumming Street

Lot 6

Interior Living SF: 3,486-3,768. Exterior Living SF: 971. Total Living SF: 4,457-4,739.

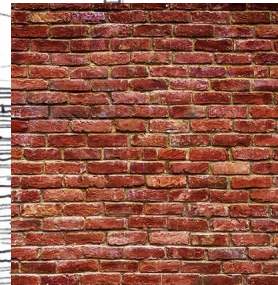


1858 Lot 6



Certaineed Grand Manor  
Weathered Wood

Traditional Double Hung  
Exterior: French Vanilla  
Simulated Divided Lites  
Colonial Grill  
Interior: Primed  
Hardware: Brass



Red Brick with  
Sahara Mortar



1/2 Round Gutters: Trim Color  
Round Downspouts: Background Color



SW Iron Ore

Shutters, Front Door, Iron Railing



BM Swiss Coffee

Windows & Trim



Front Porch Floor Tiles

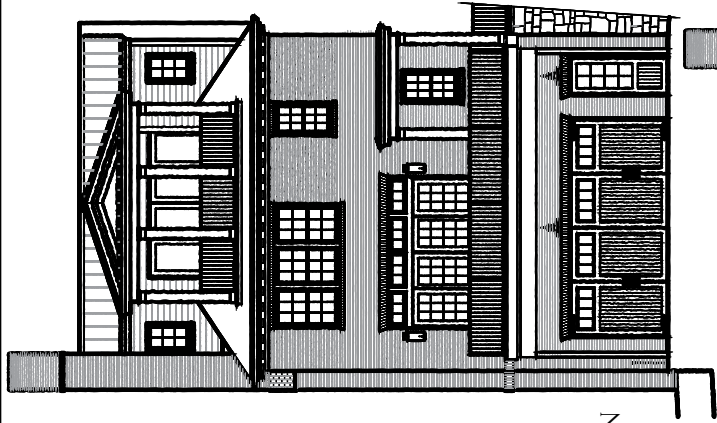


Operable Louvered Shutters

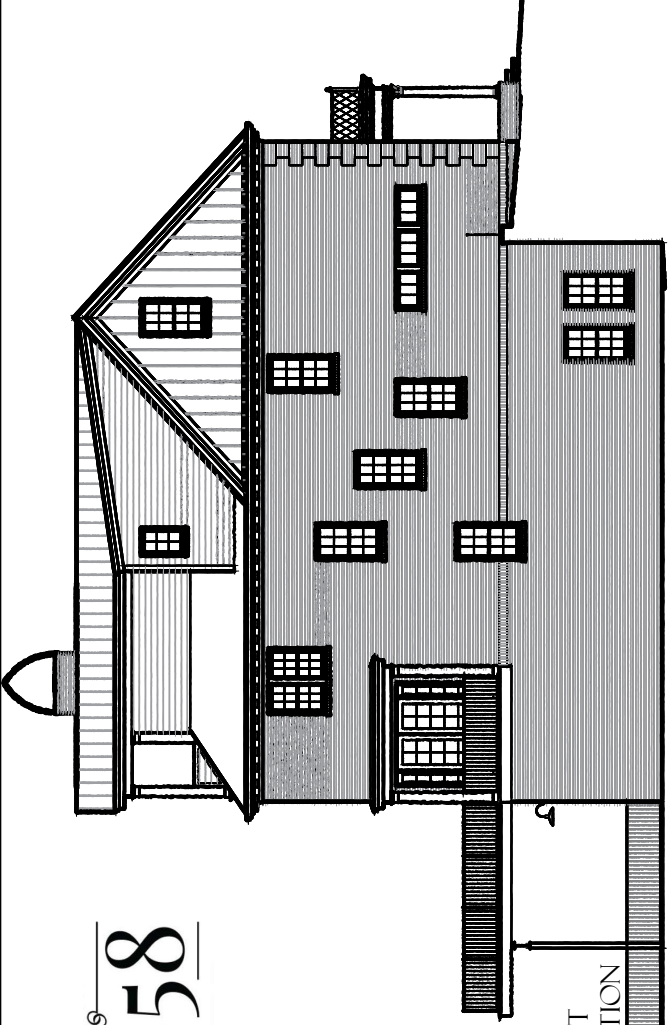


\*Paints and stains to be field verified prior to application.

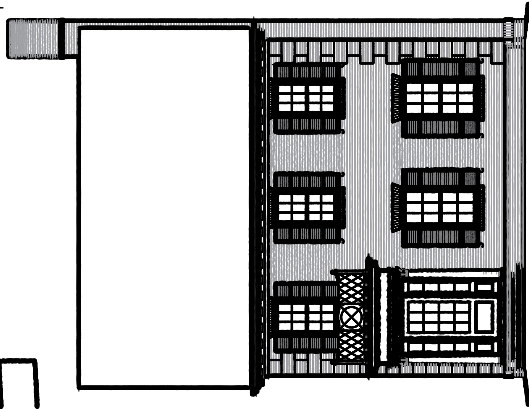
# THE 1858



REAR  
ELEVATION



LEFT  
ELEVATION

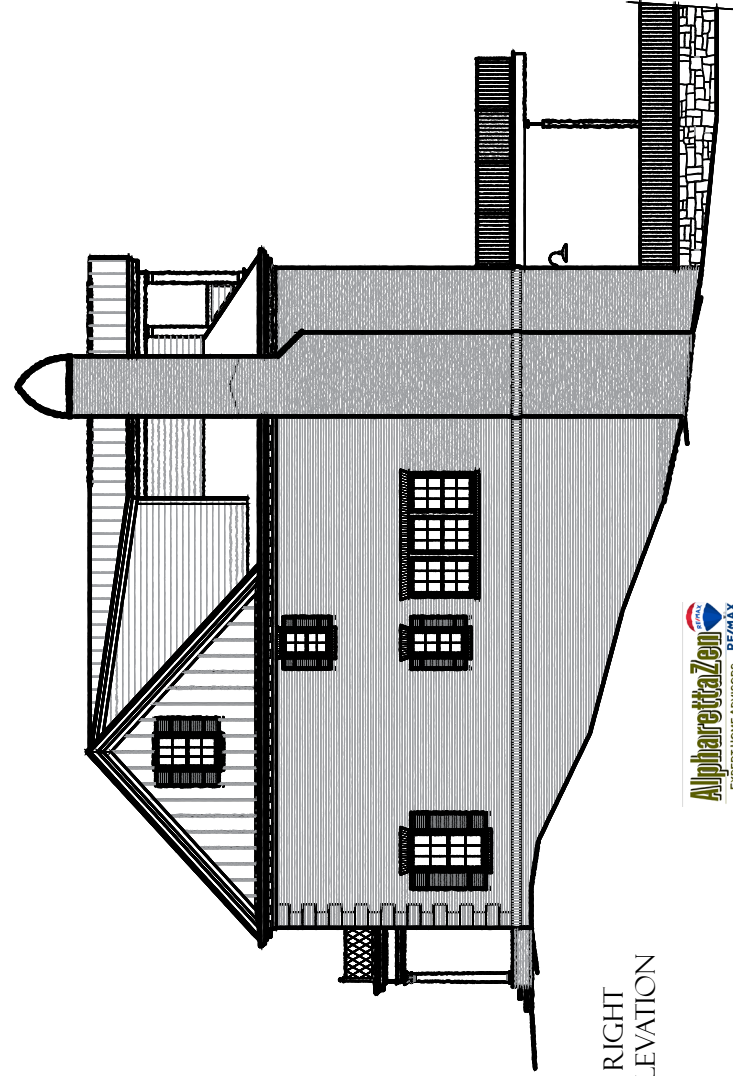


FRONT  
ELEVATION

LOT 6



DRAWINGS ARE AT 1/16"  
SCALE WHEN PRINTED  
ON A 8.5"X11"

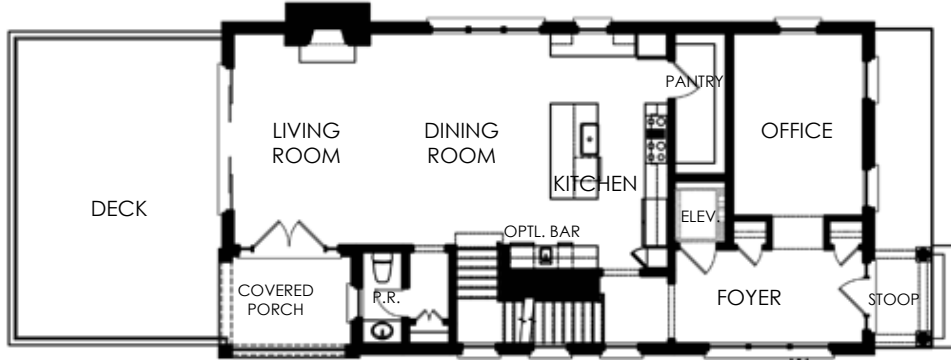
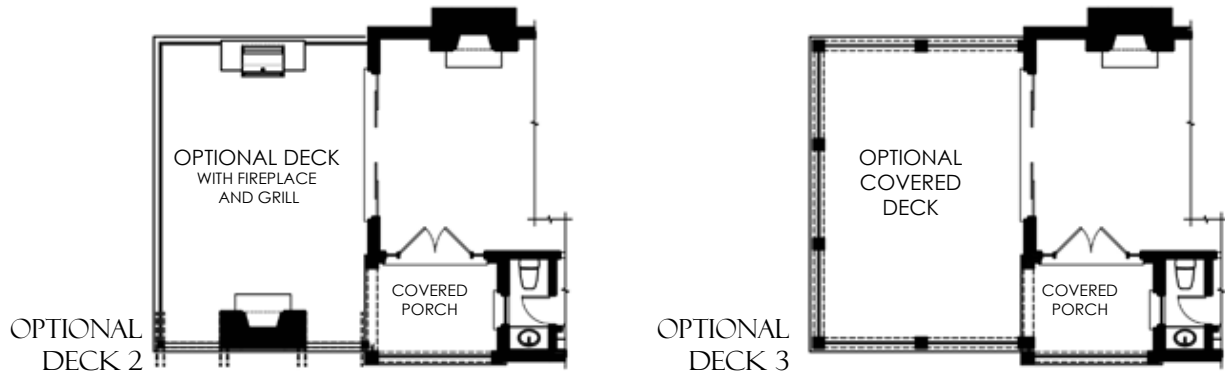


RIGHT  
ELEVATION

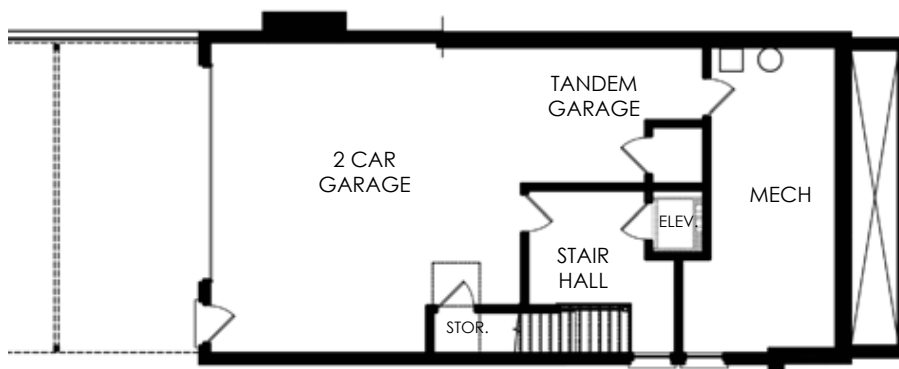
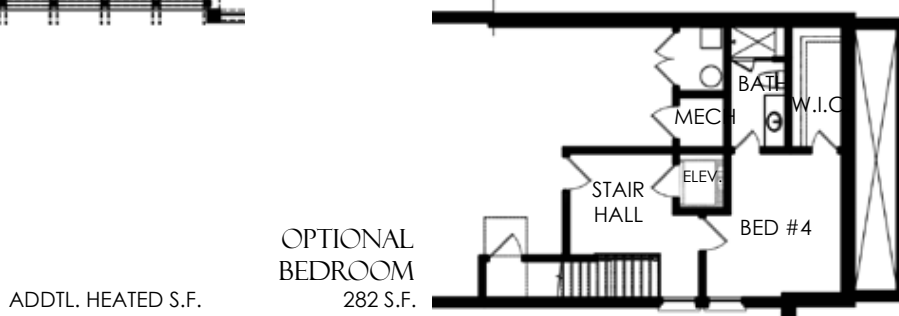
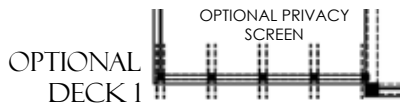
A  
CLASSICAL  
STUDIO

**VISION**  
DEVELOPMENT PARTNERS, LLC  
**PATRICK MALLOY**  
COMMUNITIES

**AlpharettaZon**  
EXPERT HOME ADVISORS  
RE/MAX



MAIN LEVEL



LOWER LEVEL  
LOT 6

HEATED S.F. 3,486 S.F.  
 OUTDOOR LIVING S.F. 971 S.F.  
 UNHEATED S.F. 1,240 S.F.  
**TOTAL 5,697 S.F.**

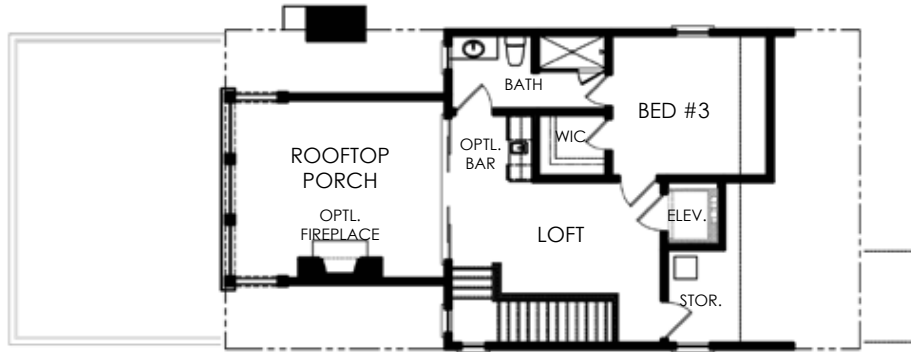


DRAWINGS ARE AT 1/16"  
 SCALE WHEN PRINTED  
 ON A 8.5"X11"

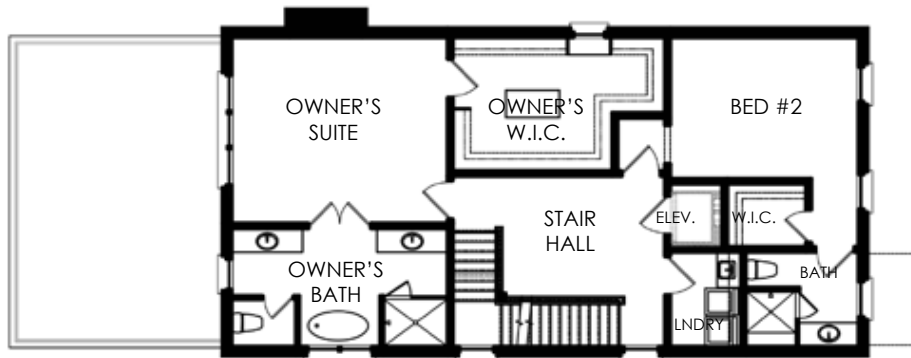
THE 1858

AlpharettaZen  
 EXPERT HOME ADVISORS RE/MAX





ATTIC LEVEL



UPPER LEVEL  
LOT 6